

Spotter Web Guide V9.4





Table of Contents

1. Spotter Web.....	3
1.1. What is Spotter Web?.....	4
1.2. Main features.....	5
1.3. Network topology.....	6
1.4. Installation.....	9
1.5. Login.....	15
1.6. Spotter Web UI.....	16
1.7. Opening & closing cameras.....	18
1.8. Playback.....	21
1.9. Views.....	22
1.9.1. New view.....	23
1.9.2. Edit views.....	24
1.10. Alarms.....	26
1.11. Export.....	30
1.12. Downloads.....	34
1.13. PTZ Control.....	36
2. Spotter Mobile.....	40
2.1. Login.....	41
2.2. Spotter Mobile UI.....	42
2.3. Export.....	43
2.4. Downloads.....	44
2.5. Alarms.....	46
2.6. Views.....	51



1. Spotter Web

[Download this user guide as PDF](#)

[Lataa tämä ohje PDF-muodossa](#)



[Next](#)



Spotter Web Guide V9.4

1.1. What is Spotter Web?

[Download this user guide as PDF](#)

[Lataa tämä ohje PDF-muodossa](#)

Spotter Web is HTML5 based client application



[Top](#) [Previous](#) [Next](#)



Spotter Web Guide V9.4

1.2. Main features

[Download this user guide as PDF](#)

[Lataa tämä ohje PDF-muodossa](#)

- All communication is automatically encrypted
- PTZ Control
- Live-view up to 25 cameras
- Play-back view up to 25 cameras
- Freely selectable camera grid up to 25 cameras
- Digital output controlling
- Customized views
 - Name
 - Layout
- Alarm list with filtering
 - Active alarm
 - Ended alarms
- Export material
 - ASF
 - MP4
 - SEF

[Top](#) [Previous](#) [Next](#)



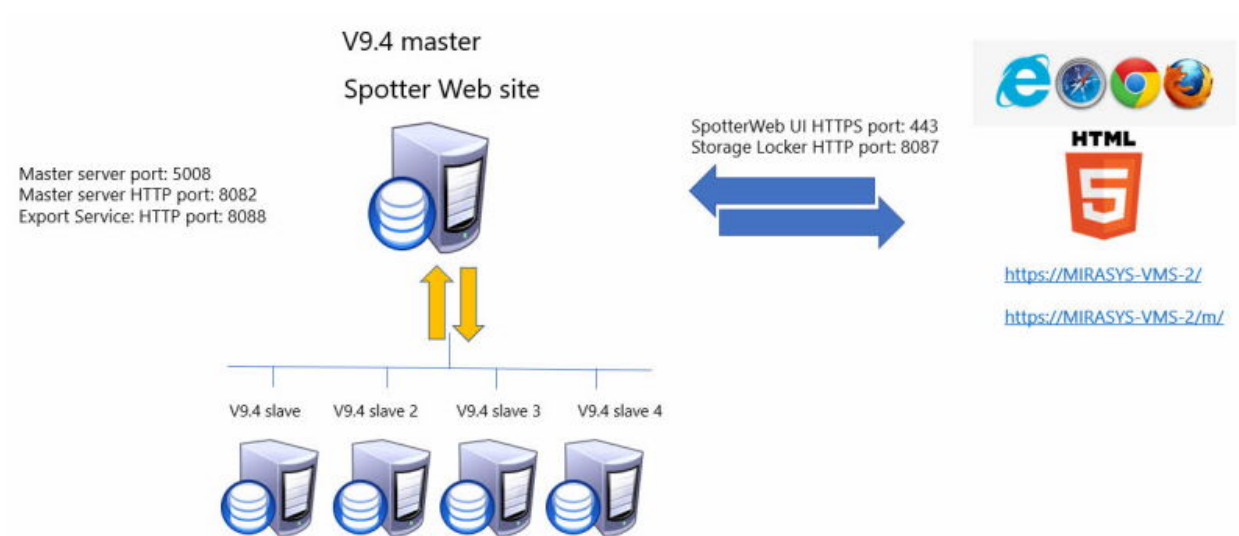
Spotter Web Guide V9.4

1.3. Network topology

[Download this user guide as PDF](#)

[Lataa tämä ohje PDF-muodossa](#)

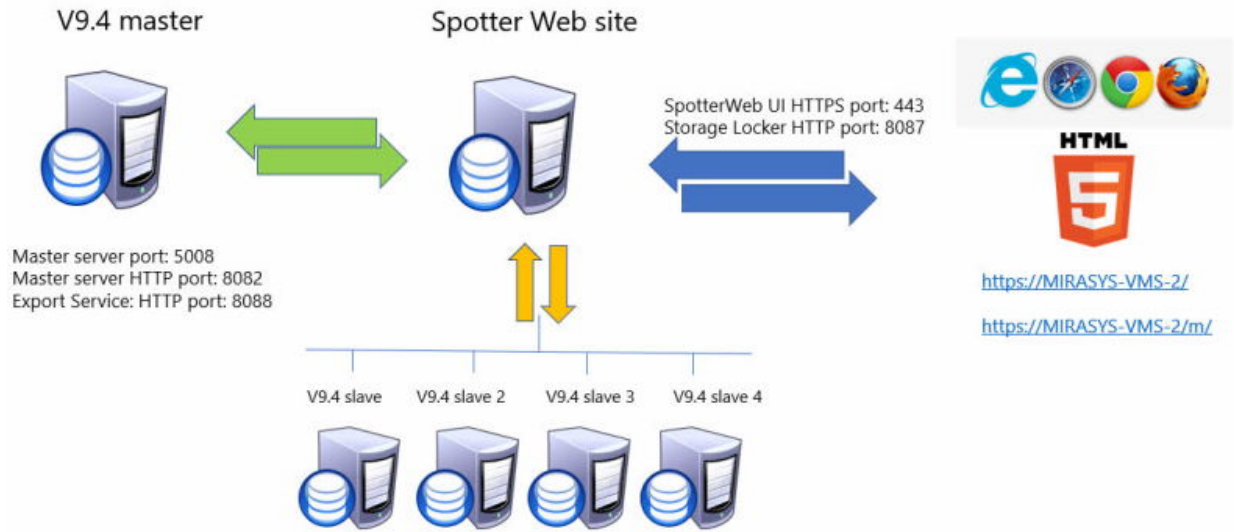
Mirasys Spotter Web installed to the same PC with Mirasys VMS



Mirasys Spotter Web installed to the separate PC



Spotter Web Guide V9.4



Mirasys Spotter Web site

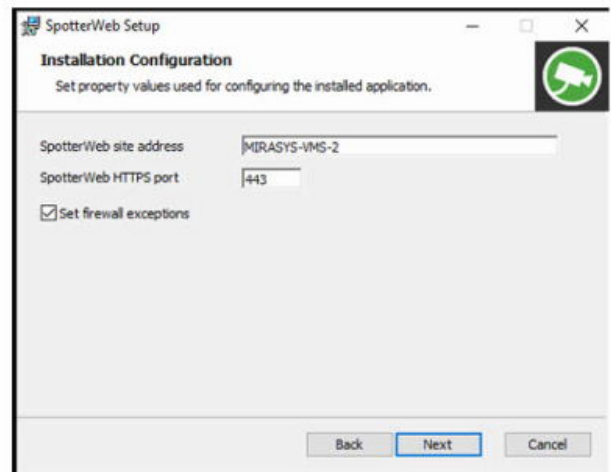
V9.4

- SpotterWeb site address: DNS name of the PC
- SpotterWeb HTTPS port: 443

Microsoft IIS

IIS Application pool

Client SSL certificate





Mirasys Spotter Web public access



Spotter Web site



SpotterWeb UI HTTPS port: 443(INBOUND)
Storage Locker HTTP port: 8087(INBOUND)



Spotter Web site address can be the public IP address or domain name

www.mirasys.com

Spotter Web login
<https://MIRASYS-VMS-2/>

Spotter Web Mobile login
<https://MIRASYS-VMS-2/m/>

[Top](#) [Previous](#) [Next](#)



Spotter Web Guide V9.4

1.4. Installation

[Download this user guide as PDF](#)

[Lataa tämä ohje PDF-muodossa](#)

- ! **Spotter Web is working only with Enterprise and Enterprise Plus master server**
- ! **If you want to use Spotter Web, the master server MUST be V9.4 or newer!.**

OS limitations

If SpotterWeb is installed on client OS, there can be a maximum of 10 simultaneous connections: <https://docs.microsoft.com/en-us/iis/troubleshoot/request-restrictions>

For each SpotterWeb login, 3 connections are made: HTTP, SignalR for events and WebSocket for streaming. So for example Windows 10 Professional, only 3 clients can log in at the same time.

There are no similar limitations in server OS, so it is highly recommended to install SpotterWeb to Windows Server OS.

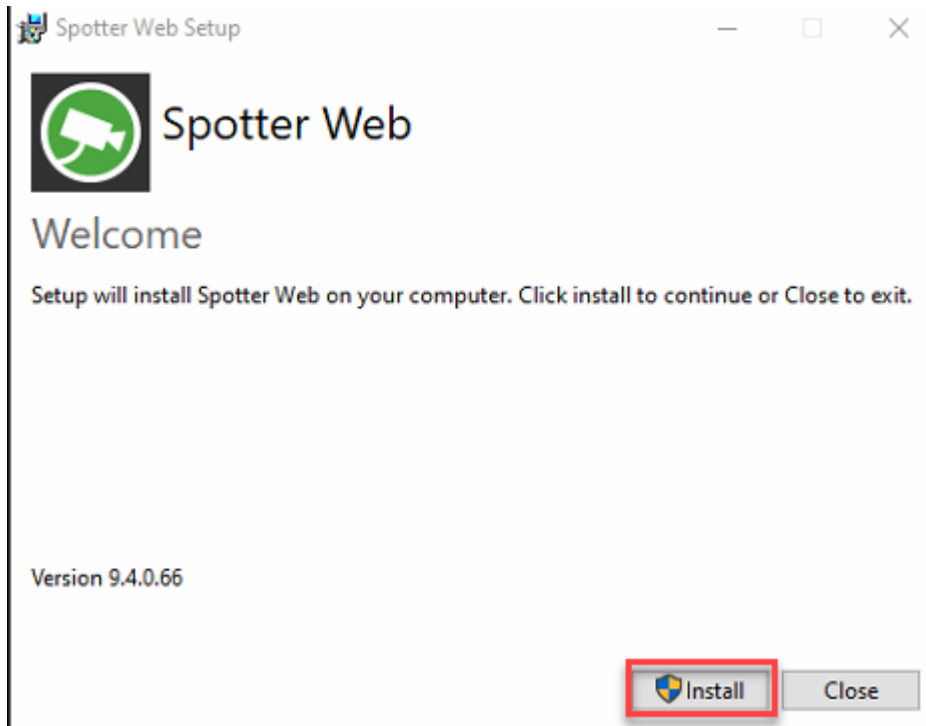
When installing SpotterWeb to client OS, the installer will give a warning about the OS/IIS limitations.

Spotter Web installation

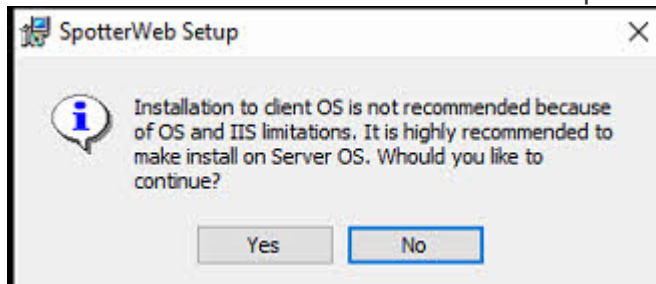
1. Start the installation by clicking SpotterWeb installation package
2. Click **Install**



Spotter Web Guide V9.4



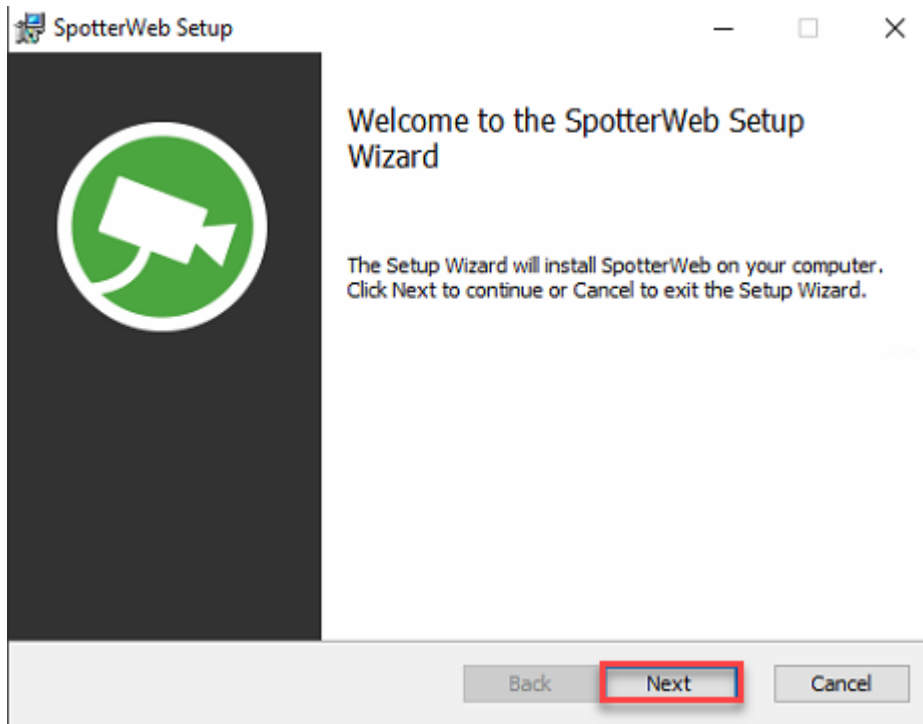
3. Confirm notification about the operating system limitation



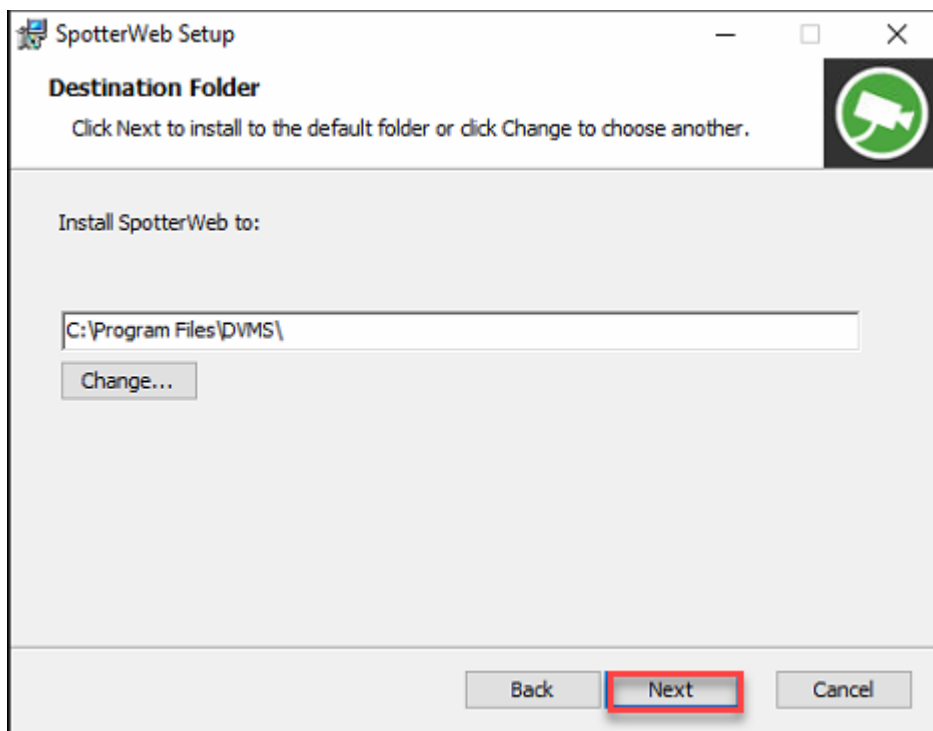
4. Click **Next**



Spotter Web Guide V9.4



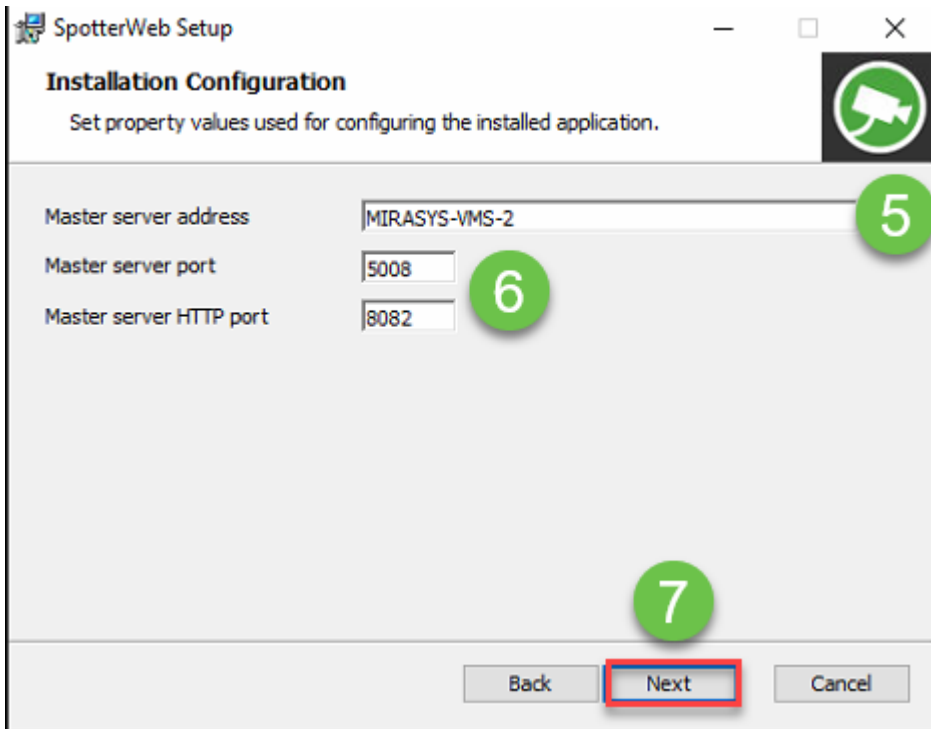
5. Use the default installation folder and click **Next**



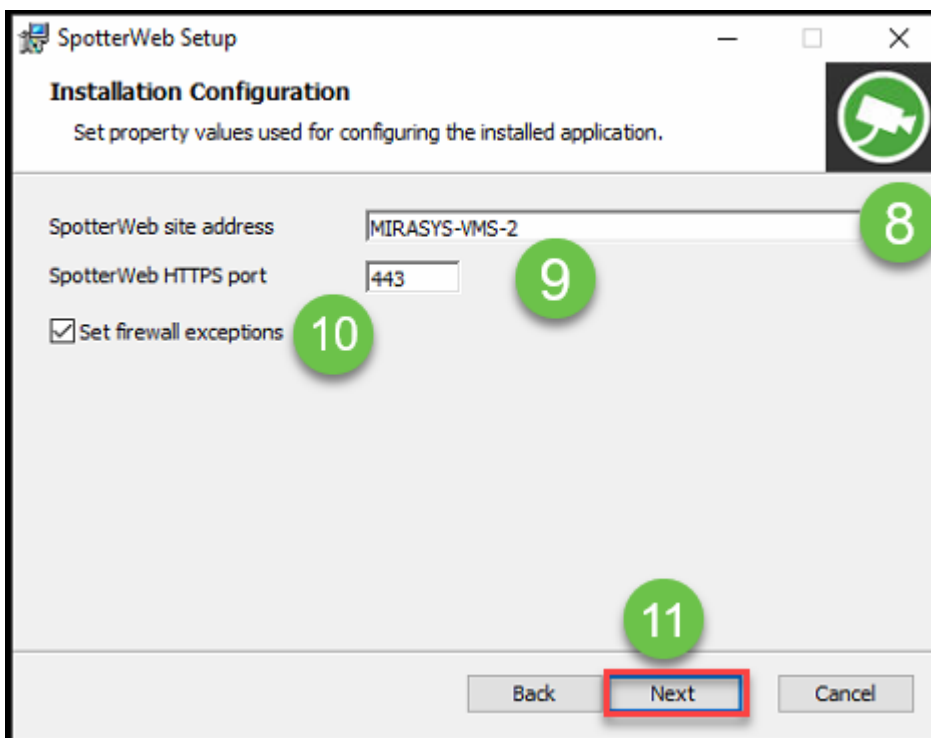
6. Set the **master server address**(the computer name of the master server PC)
5. Use default **master server port** and **master server HTTP port**
6. Click **Next**



Spotter Web Guide V9.4



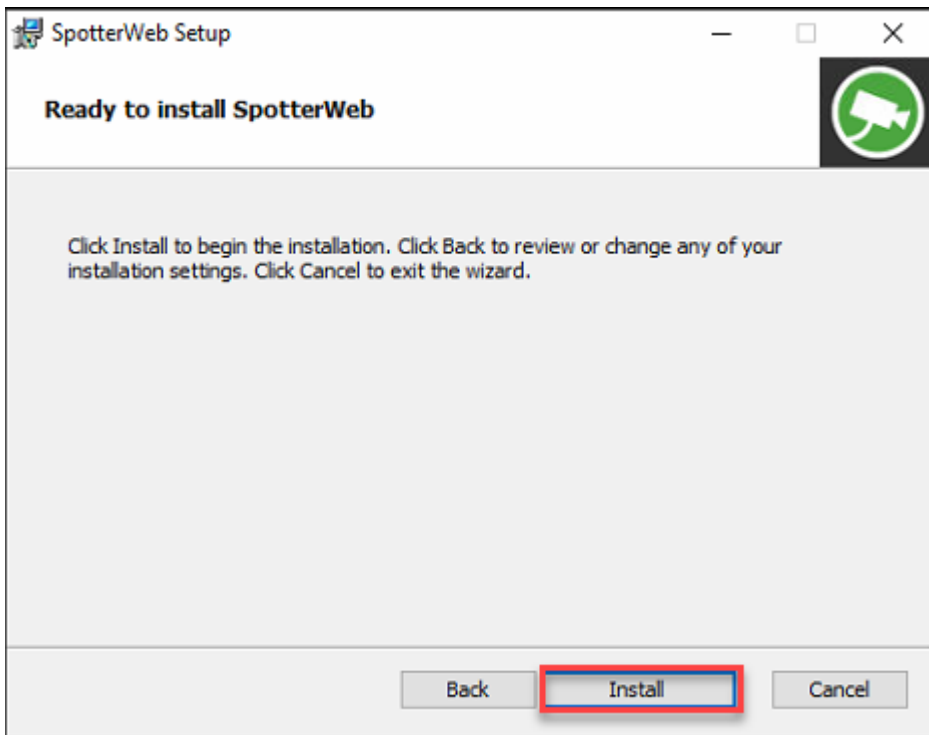
9. Set the **SpotterWeb site address**(the computer name of the master server PC)
5. Use default **SpotterWeb HTTPS port(443)**
6. Check that **Set firewall exceptions** are enabled
7. Click **Next**



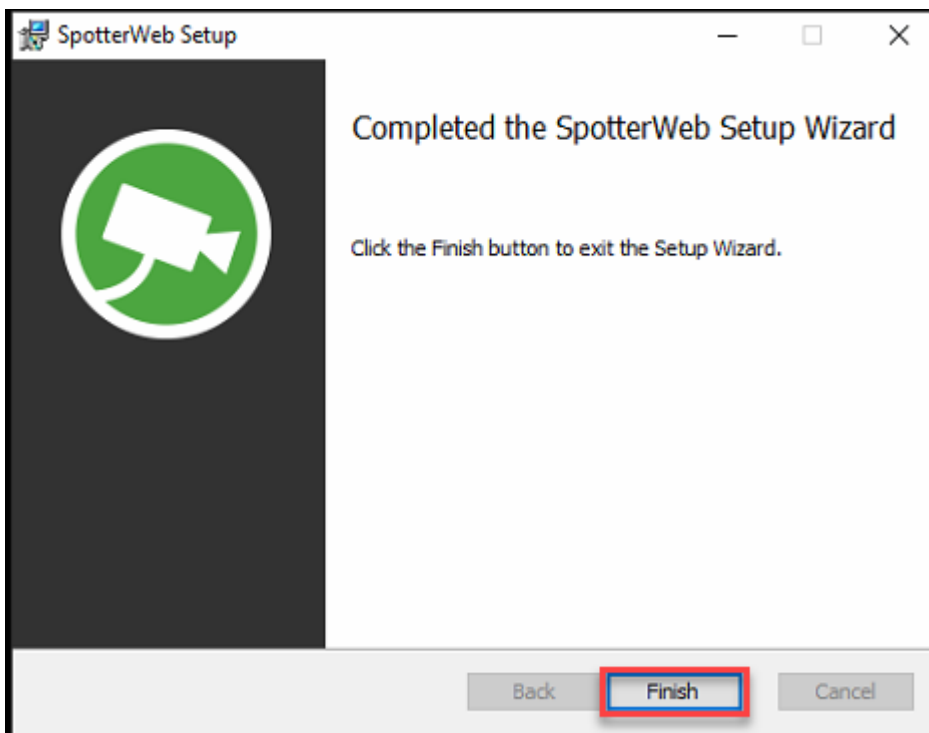


Spotter Web Guide V9.4

13. Click **Install**



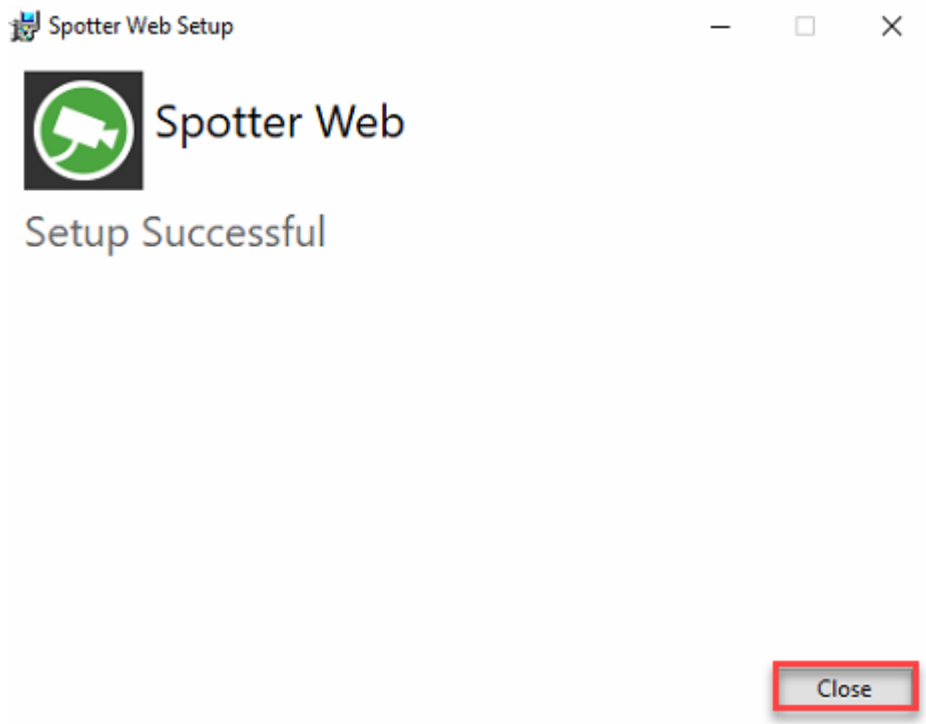
14. Click **Finish**



15. Click **Close** to finalize the installation



Spotter Web Guide V9.4



[Top](#)

[Next](#)

[Previous](#)

[Top](#) [Previous](#) [Next](#)



Spotter Web Guide V9.4

1.5. Login

[Download this user guide as PDF](#)

[Lataa tämä ohje PDF-muodossa](#)

1. Open browser
2. Type https://Spotter website computer name/
3. Enter the username and password
4. Click OK

Please login

Username: SpotterWeb

Password: ****

OK

[Top](#)

[Next](#)

[Previous](#)

[Top](#) [Previous](#) [Next](#)



Spotter Web Guide V9.4

1.6. Spotter Web UI

[Download this user guide as PDF](#)

[Lataa tämä ohje PDF-muodossa](#)





Spotter Web Guide V9.4

1. Profile
2. Device tree
3. Work Area
4. Playback controls
5. Grid selection
6. Export material
7. Show alarms
8. Fullscreen
9. PTZ control
10. Logout and Settings
11. View management

[Top](#)

[Next](#)

[Previous](#)

[Top](#) [Previous](#) [Next](#)

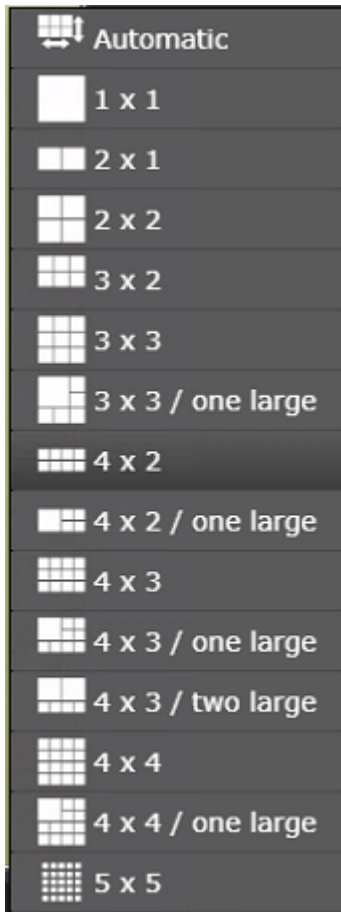


1.7. Opening & closing cameras

[Download this user guide as PDF](#)

[Lataa tämä ohje PDF-muodossa](#)

1. Select the amount of the grids or use **Automatic**

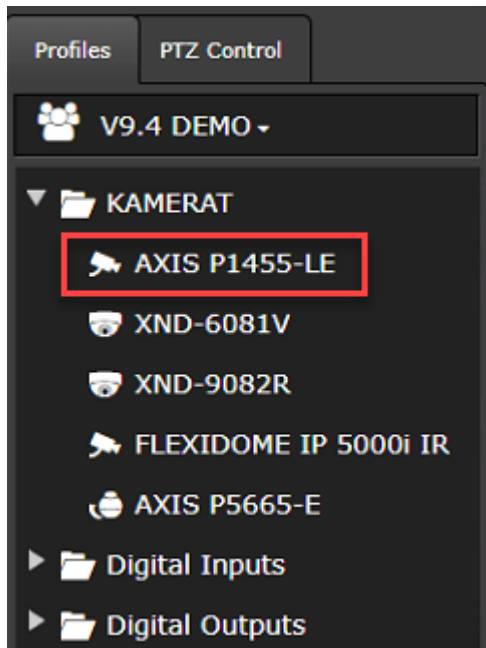


Opening cameras

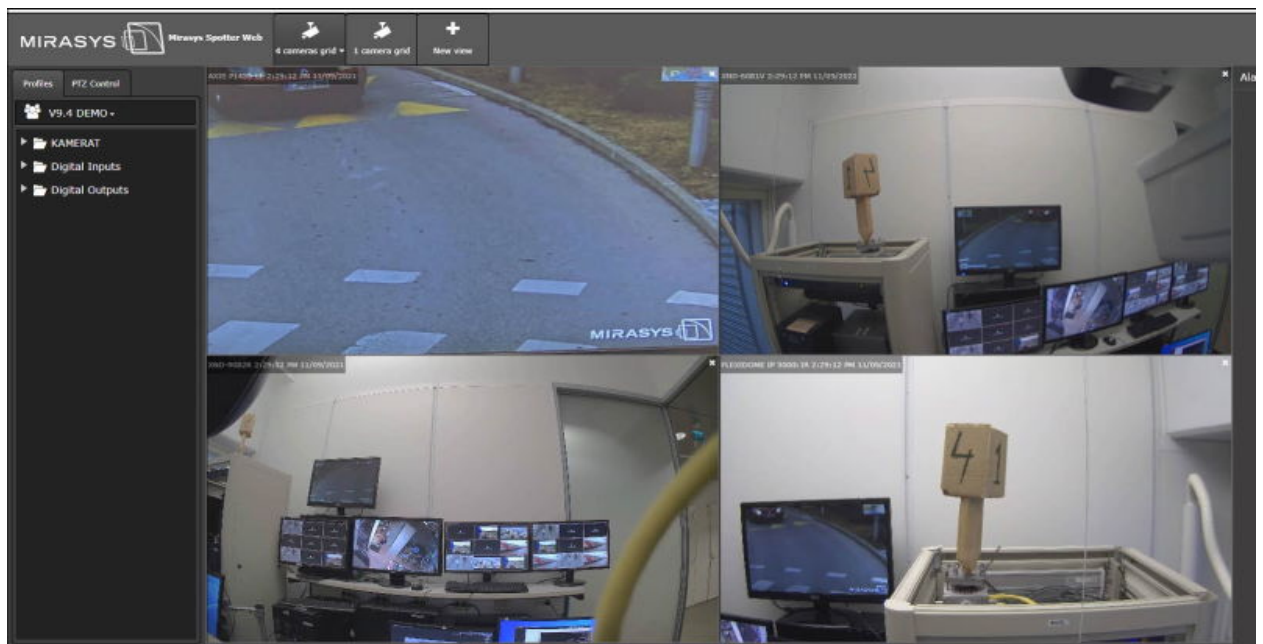
1. **Left mouse click** top of the camera name in the device tree



Spotter Web Guide V9.4



Selected cameras are opened with the camera name and time stamp.



Closing cameras

1. **Click** the **X** icon from the needed camera image upper right corner



Spotter Web Guide V9.4



[Top](#) [Previous](#) [Next](#)



Spotter Web Guide V9.4

1.8. Playback

[Download this user guide as PDF](#)

[Lataa tämä ohje PDF-muodossa](#)

Instant playback

1. Select camera or cameras from the device tree
2. Click playback
3. Change the playback speed by clicking the mouse left of the playback buttons or using the playback slider



Slider shows the selected playback speed



[Top](#) [Previous](#) [Next](#)



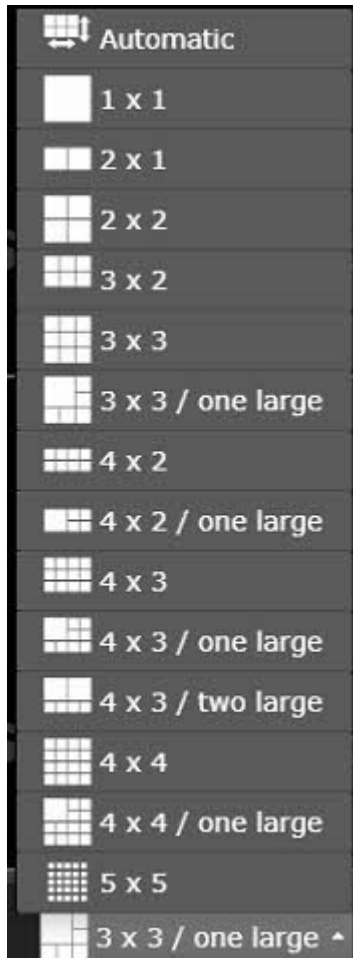
Spotter Web Guide V9.4

1.9. Views

[Download this user guide as PDF](#)

[Lataa tämä ohje PDF-muodossa](#)

From the views, users can select the pre-defined grids to the views



[Top](#) [Previous](#) [Next](#)



Spotter Web Guide V9.4

1.9.1. New view

[Download this user guide as PDF](#)

[Lataa tämä ohje PDF-muodossa](#)

1. Click **New view**



2. Set view name
3. Select used grid
4. Set update image settings
5. Click **Save**

Edit view

View name

Edit layout

Grid

Show grid borders

Default image fit Off Stretch Crop

Update image

Continuously

When motion is detected

When motion is detected, minimum interval

[Top](#)

[Previous](#) [Next](#)



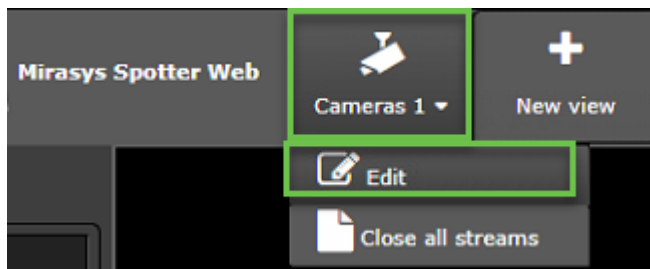
Spotter Web Guide V9.4

1.9.2. Edit views

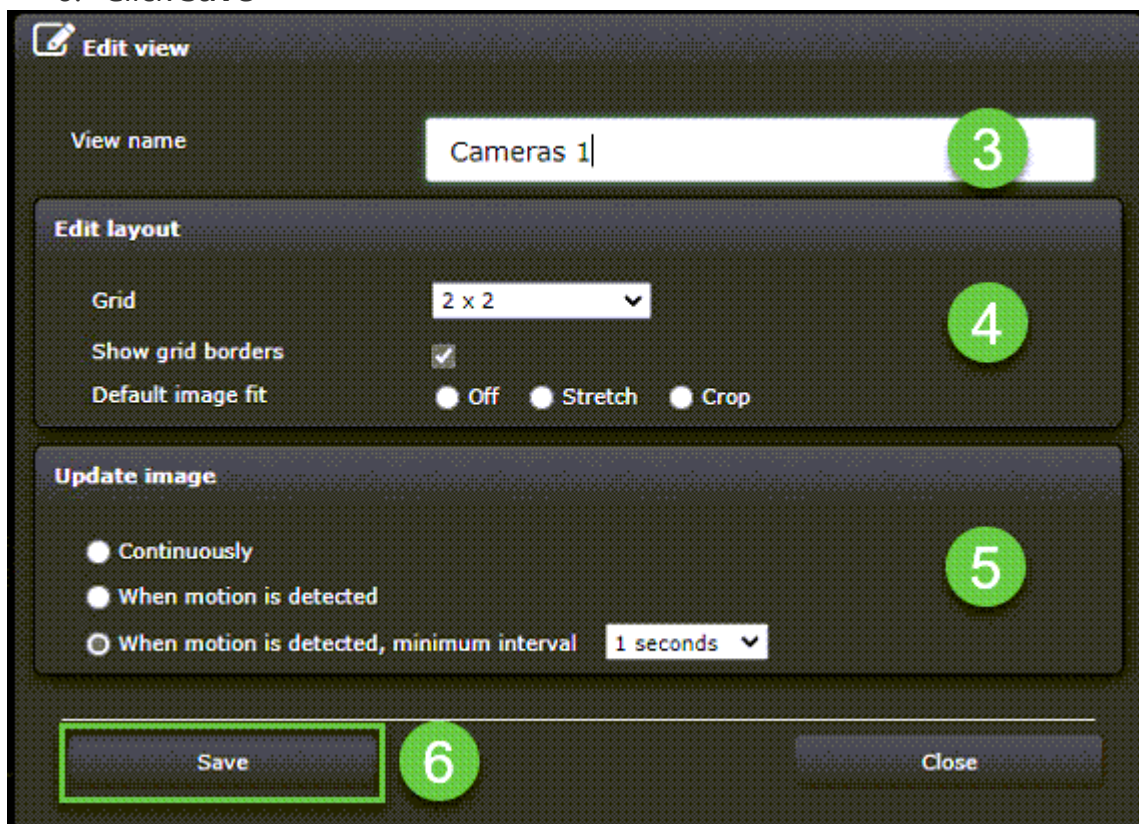
[Download this user guide as PDF](#)

[Lataa tämä ohje PDF-muodossa](#)

1. Select the view
2. Click **Edit**



3. Edit view name
4. Select layout
5. Set update image settings
6. Click **Save**





Spotter Web Guide V9.4

[Top](#) [Previous](#) [Next](#)



Spotter Web Guide V9.4

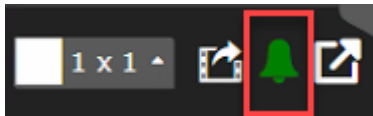
1.10. Alarms

[Download this user guide as PDF](#)

[Lataa tämä ohje PDF-muodossa](#)

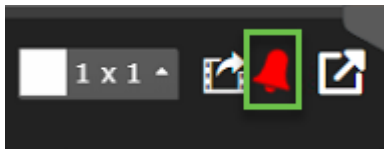
The alarm list can be opened from the lower-left corner

If there are no active alarms, the icon is **GREEN**

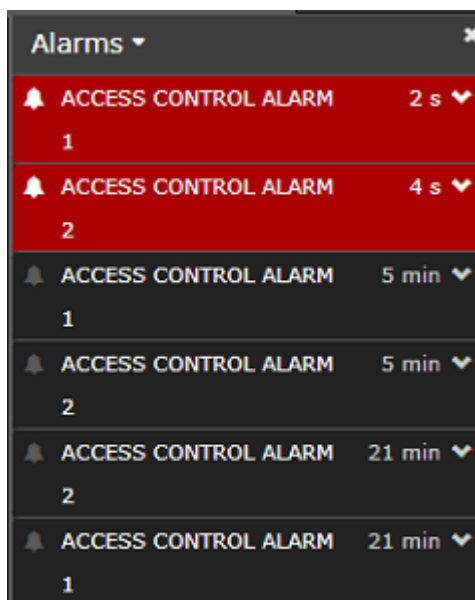


Active Alarms

If there are active alarms, the icon is **RED**



When the alarm list is opened, the list shows active alarms with **RED** background and ended alarms with **GREY** background



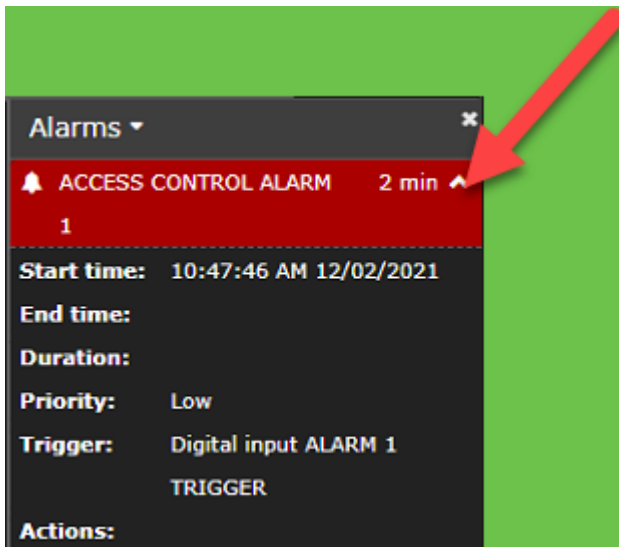
The user can see details of the alarm by clicking the small arrow end of the alarm name



Spotter Web Guide V9.4

The following details are shown:

- Alarm name
- Start time
- End time
- Duration
- Priority
- Trigger
- Actions

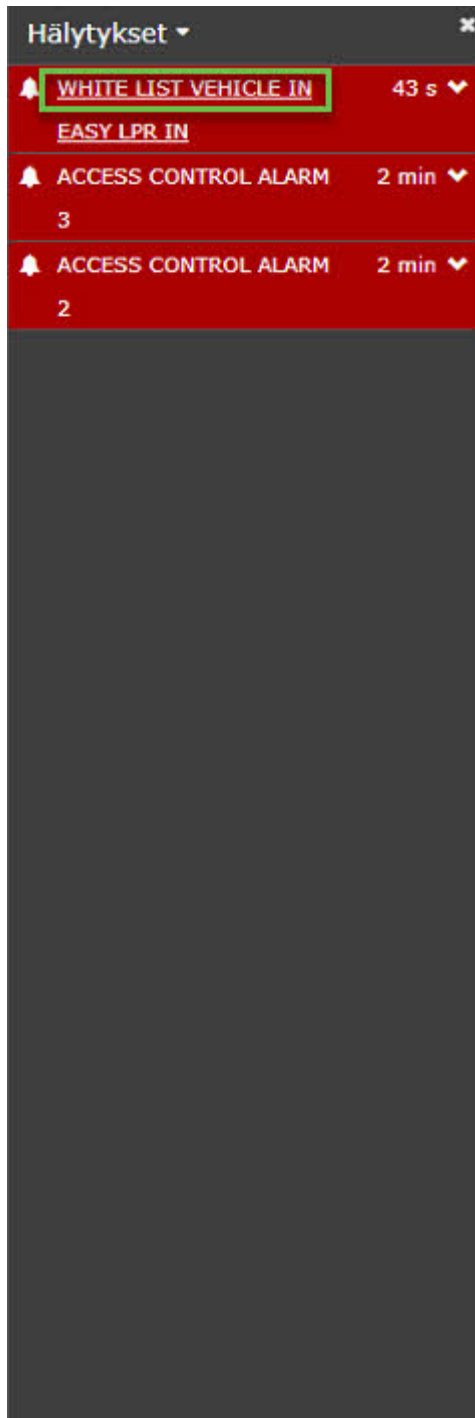


Opening an alarm

Alarms can be opened by selecting an alarm from the list



Spotter Web Guide V9.4



When an alarm is opened, then all cameras, which has been set as alarm action cameras will be opened



Spotter Web Guide V9.4



[Top](#) [Previous](#) [Next](#)



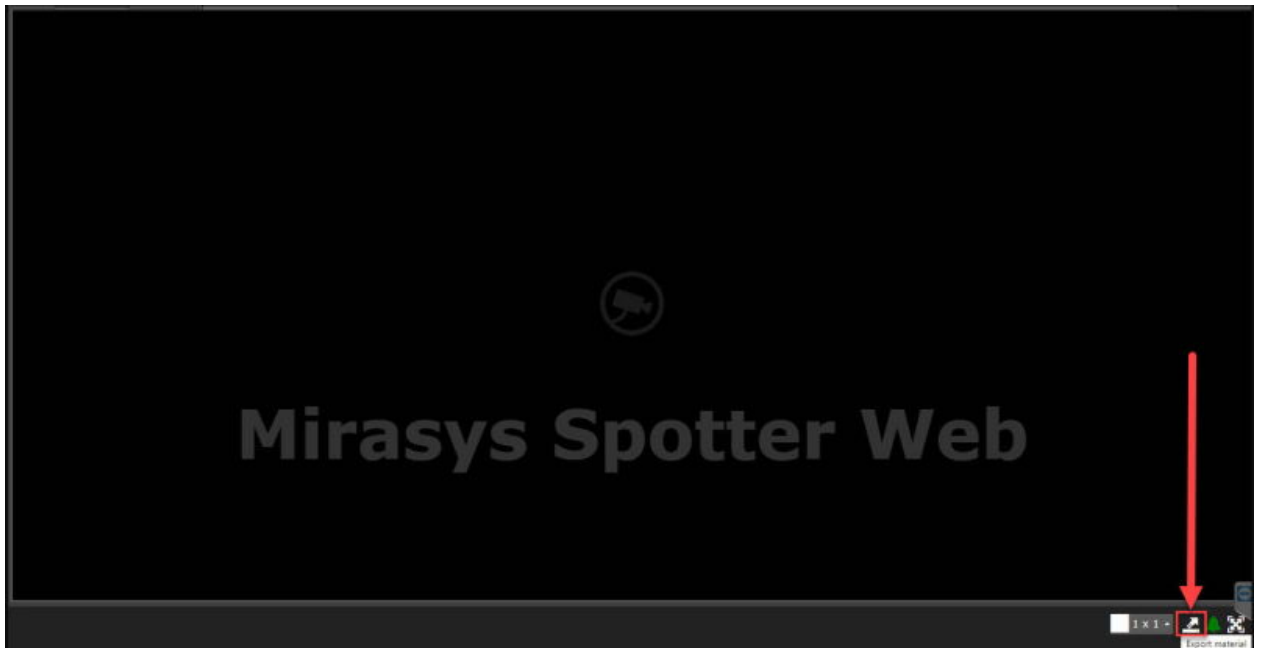
Spotter Web Guide V9.4

1.11. Export

[Download this user guide as PDF](#)

[Lataa tämä ohje PDF-muodossa](#)

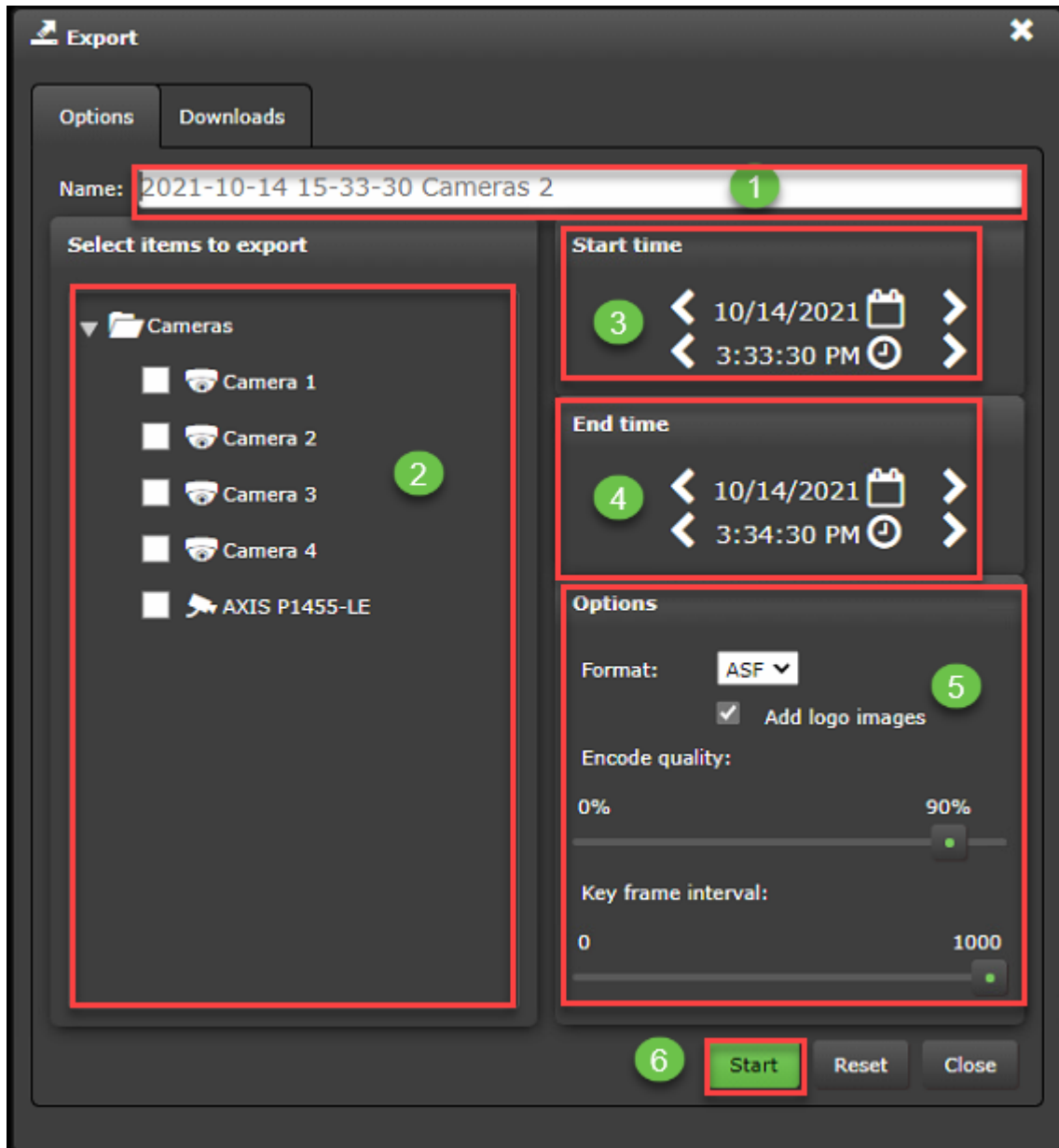
Click the **Export material** icon from the lower right corner



1. Set name for the **Export**
2. Select items to export
3. Set Start time
4. Set End time
5. Select Format(**ASF**, **MP4** or **SEF**)
6. Click **Start**



Spotter Web Guide V9.4

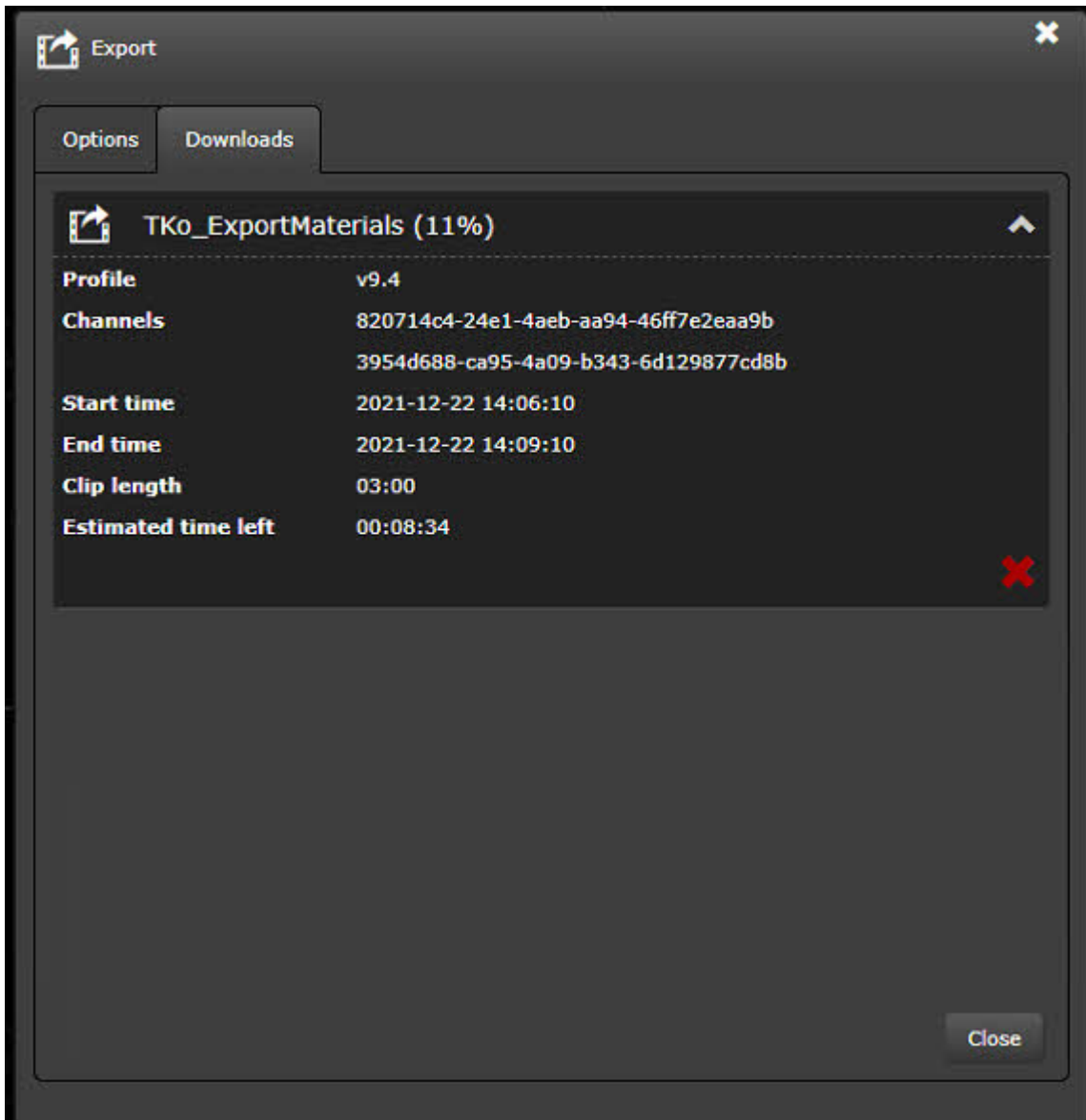


Downloads

From the **Downloads**, the users can see material export progress



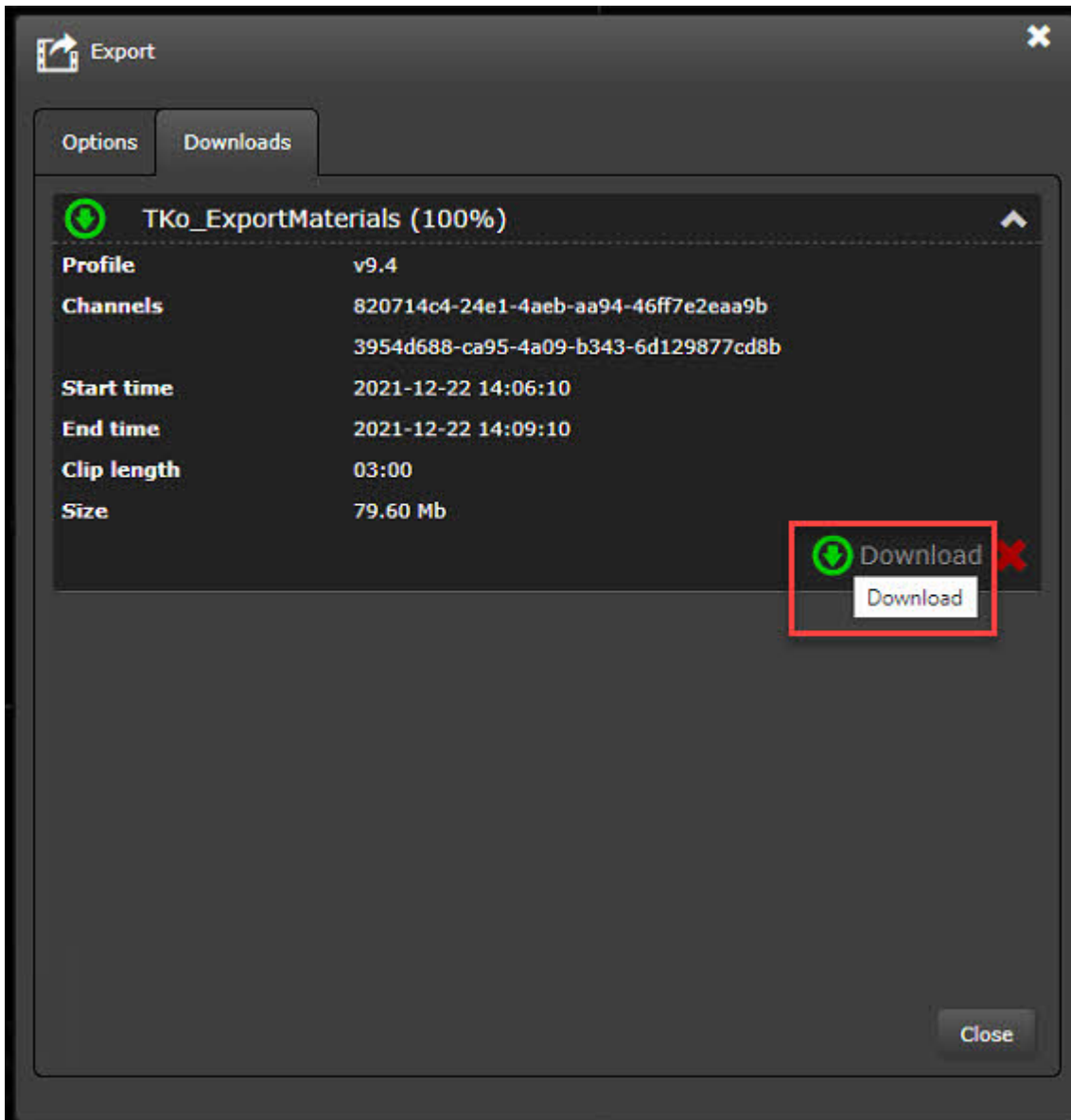
Spotter Web Guide V9.4



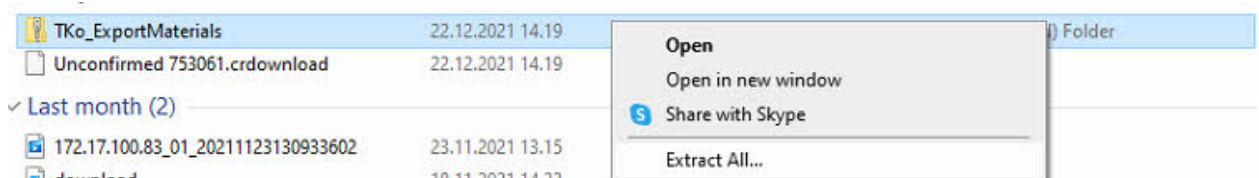
After the export, the user can download the package



Spotter Web Guide V9.4



The downloaded package is zipped and must be extracted



[Top](#) [Previous](#) [Next](#)



Spotter Web Guide V9.4

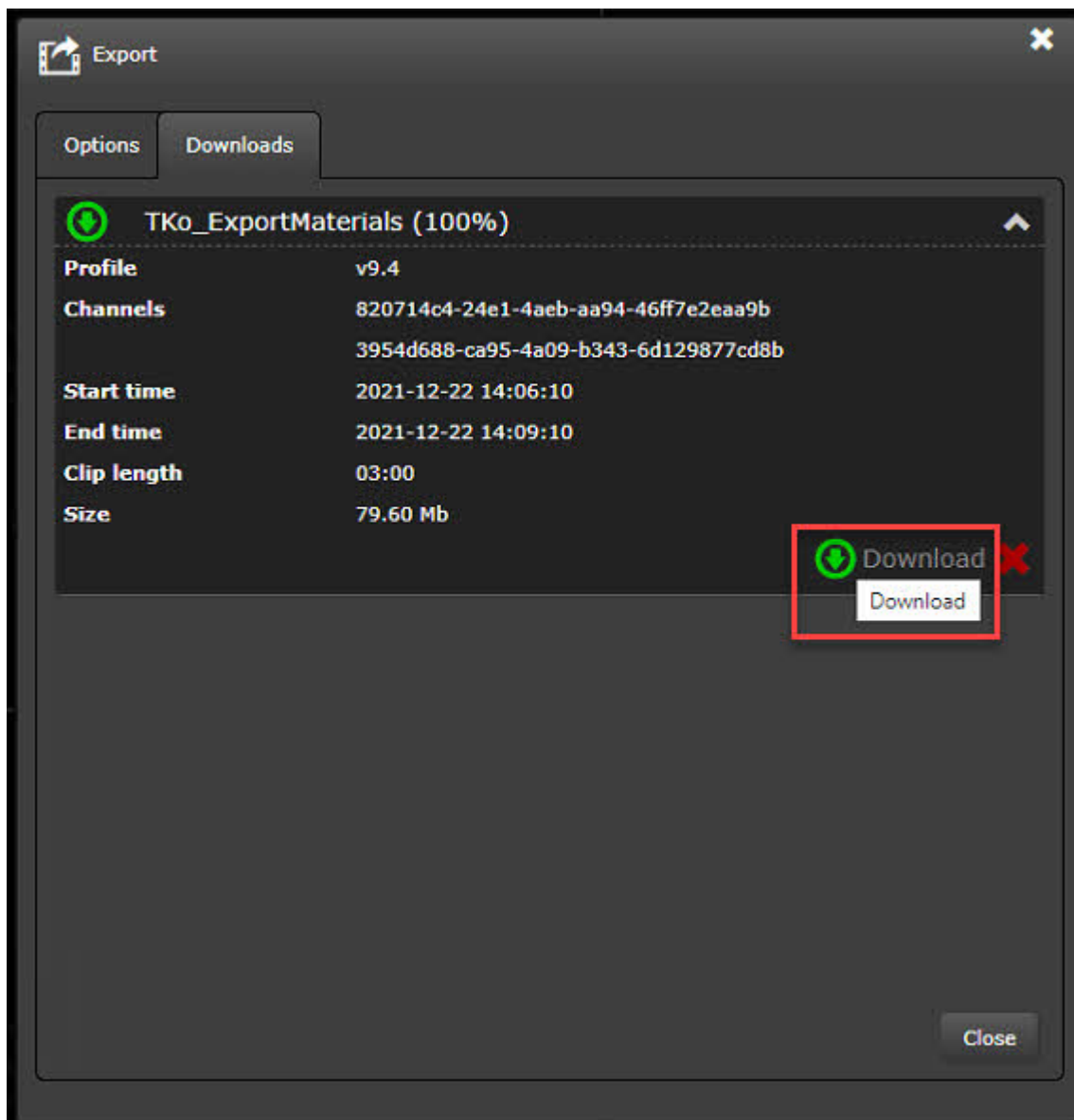
1.12. Downloads

[Download this user guide as PDF](#)

[Lataa tämä ohje PDF-muodossa](#)

Downloads contain all media clips, which the current user has been exported

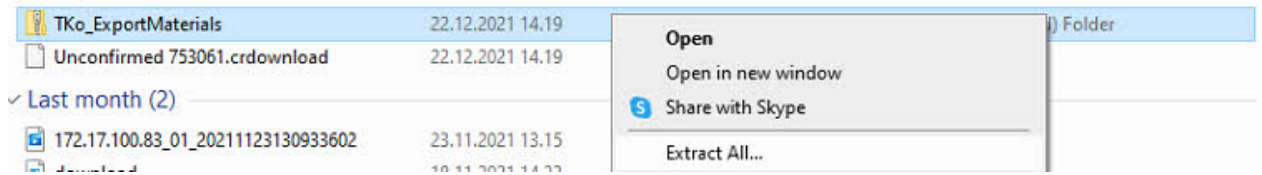
After the export, the user can download the package



The downloaded package is zipped and must be extracted

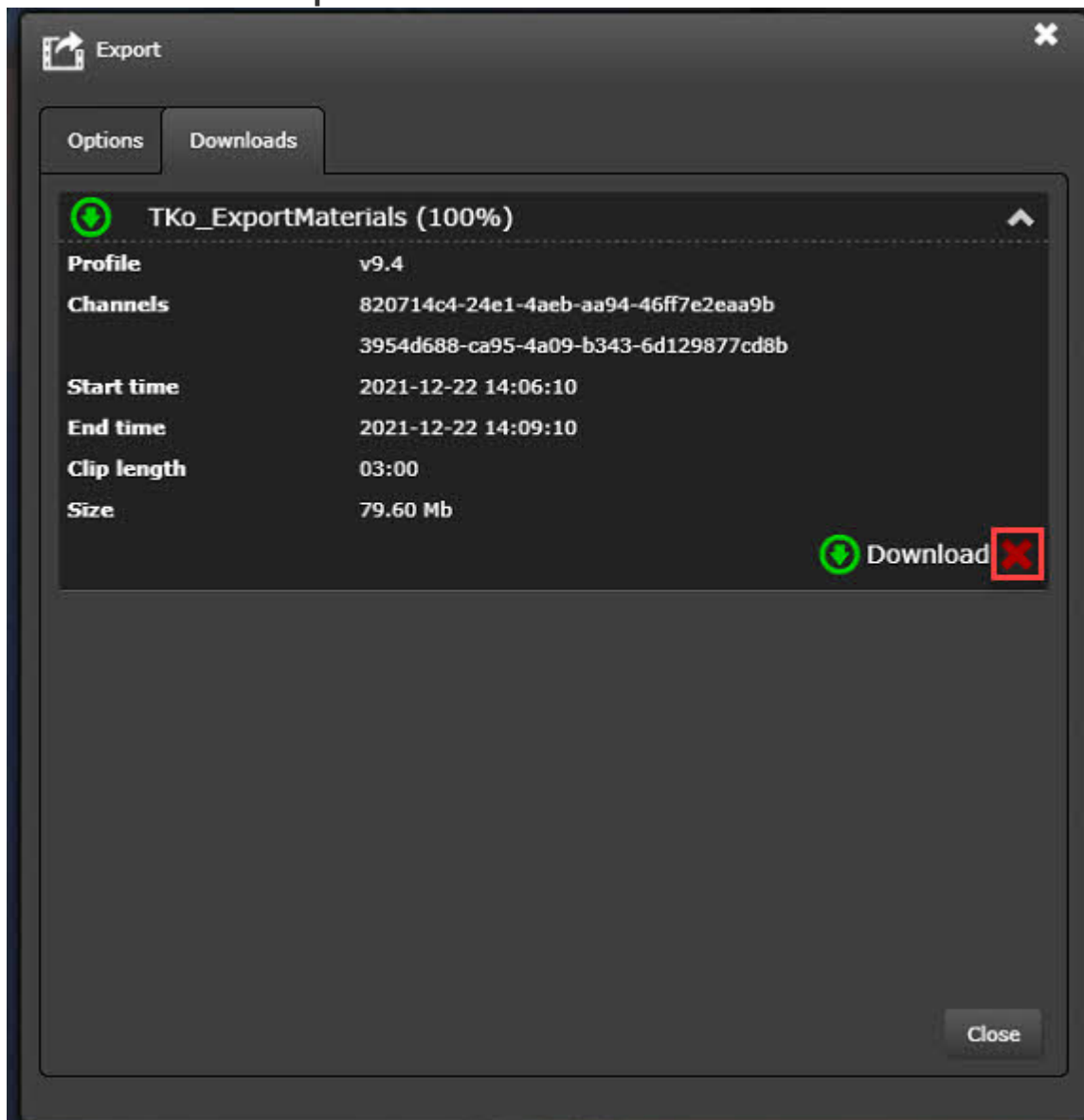


Spotter Web Guide V9.4



Deleting downloads

1. Select clip from the list
2. Click **Delete export**



[Top](#) [Previous](#) [Next](#)



Spotter Web Guide V9.4

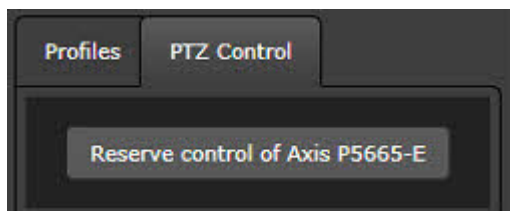
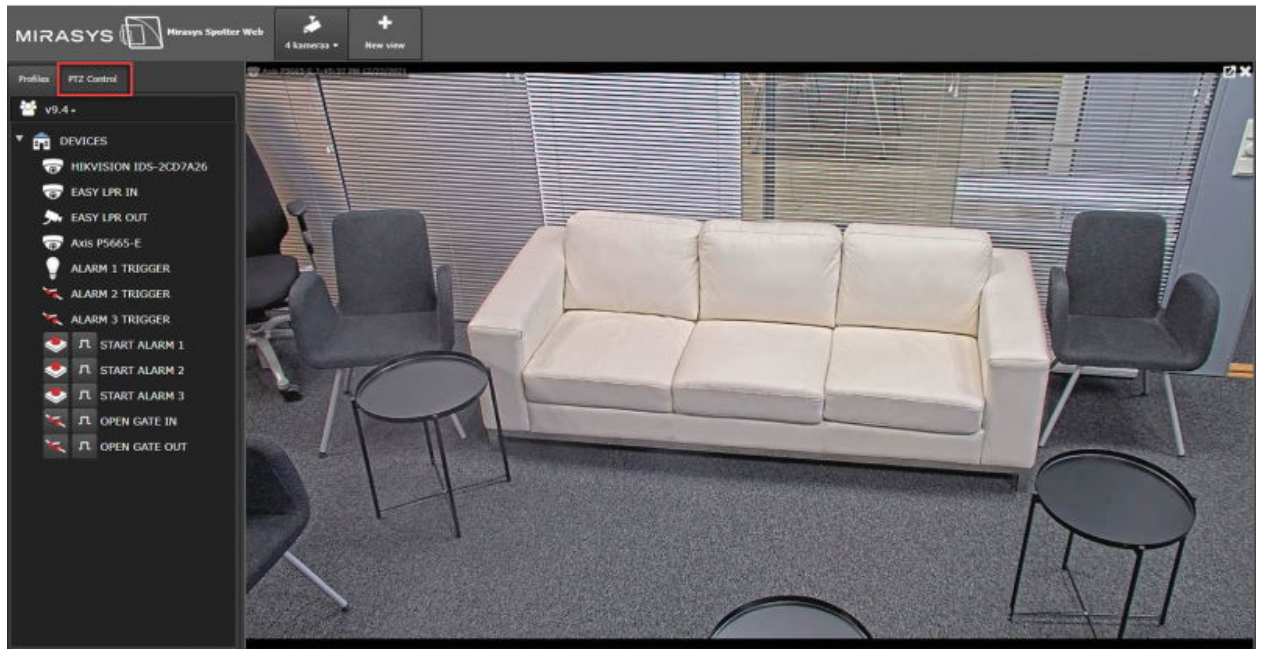
1.13. PTZ Control

[Download this user guide as PDF](#)

[Lataa tämä ohje PDF-muodossa](#)

PTZ Control

1. Open PTZ camera to the real-time view
2. Click **PTZ Control**
3. Click **Reserve control of XXXX**



3. Open PTZ Control
4. Control PTZ camera using arrows



Spotter Web Guide V9.4

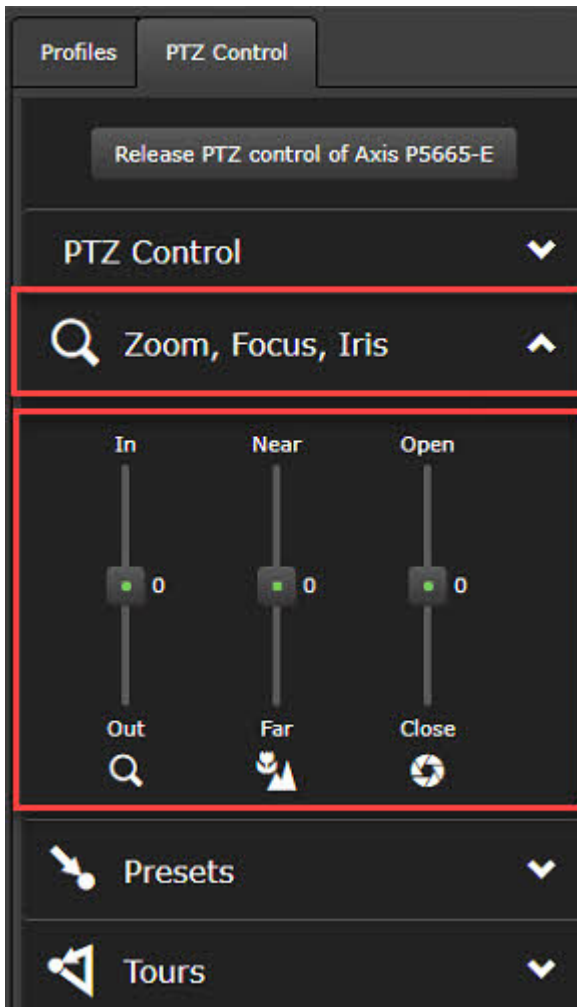


Zoom, Focus, Iris

Control PTZ camera Zoom, Focus and Iris



Spotter Web Guide V9.4



Presets

The user can control PTZ camera presets. The current preset is shown with the arrow icon end of the preset name



Spotter Web Guide V9.4



Tours

[Top](#) [Previous](#) [Next](#)



2. Spotter Mobile

[Download this user guide as PDF](#)

[Lataa tämä ohje PDF-muodossa](#)

Username

Password

Remember login

OK

[Previous](#) [Next](#)



Spotter Web Guide V9.4

2.1. Login

[Download this user guide as PDF](#)

[Lataa tämä ohje PDF-muodossa](#)

1. Open browser
2. Type https://Spotter website computer name/m
3. Enter the username and password
4. Click OK

The screenshot shows a login window with a dark theme. In the top left corner, there is a white circular icon of a globe with a camera lens. Below this icon, the 'Username' label is followed by a white input field containing the text 'Please login'. The 'Password' label is followed by a white input field containing the text 'Password'. Below the password field, there is a 'Remember login' label and a green toggle switch that is currently turned on. At the bottom of the window, there is a large green button with the text 'OK' in white.

[Top](#) [Previous](#) [Next](#)



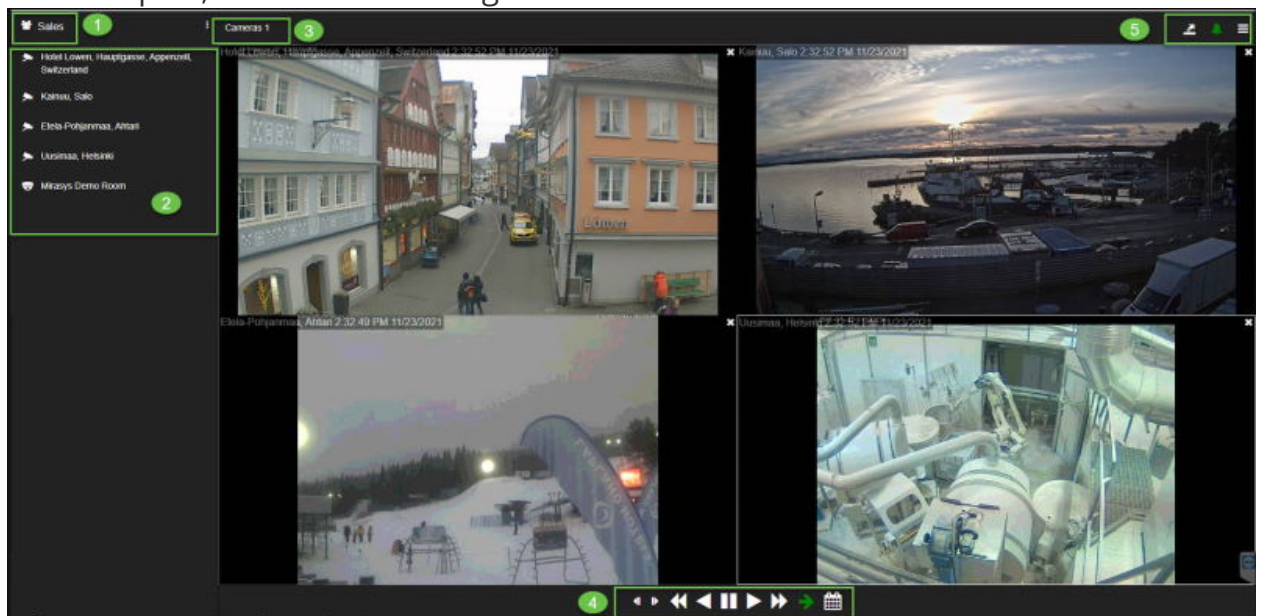
Spotter Web Guide V9.4

2.2. Spotter Mobile UI

[Download this user guide as PDF](#)

[Lataa tämä ohje PDF-muodossa](#)

1. Profile name
2. Device tree
3. View name
4. Playback controls
5. Export, Alarms and Settings



[Top](#) [Previous](#) [Next](#)



Spotter Web Guide V9.4

2.3. Export

[Download this user guide as PDF](#)

[Lataa tämä ohje PDF-muodossa](#)

Exporting media clip

1. Set the name for the export
2. Select items for the export
3. Set Start time
4. Define End time
5. Select **Copy player**, if needed
6. Set format
7. Click **Start**



[Top](#) [Previous](#) [Next](#)



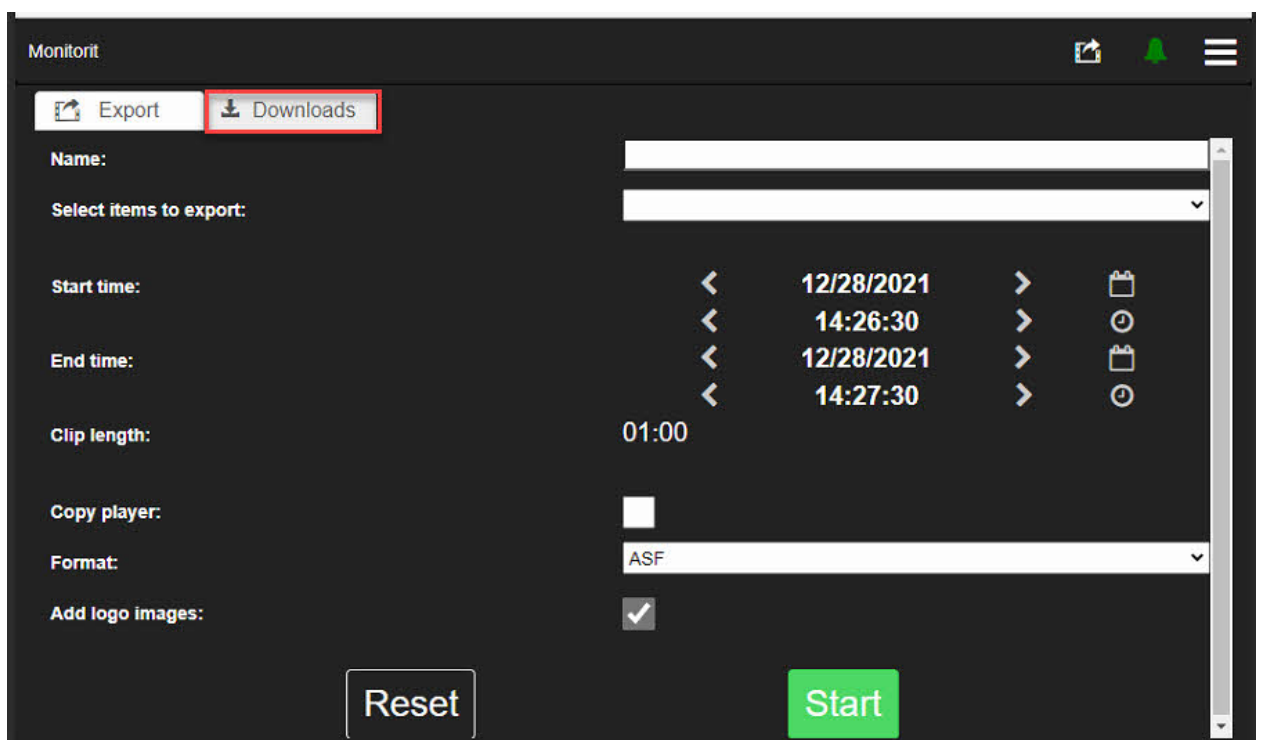
2.4. Downloads

[Download this user guide as PDF](#)

[Lataa tämä ohje PDF-muodossa](#)

Downloads contain all media clips, which the current user has been exported

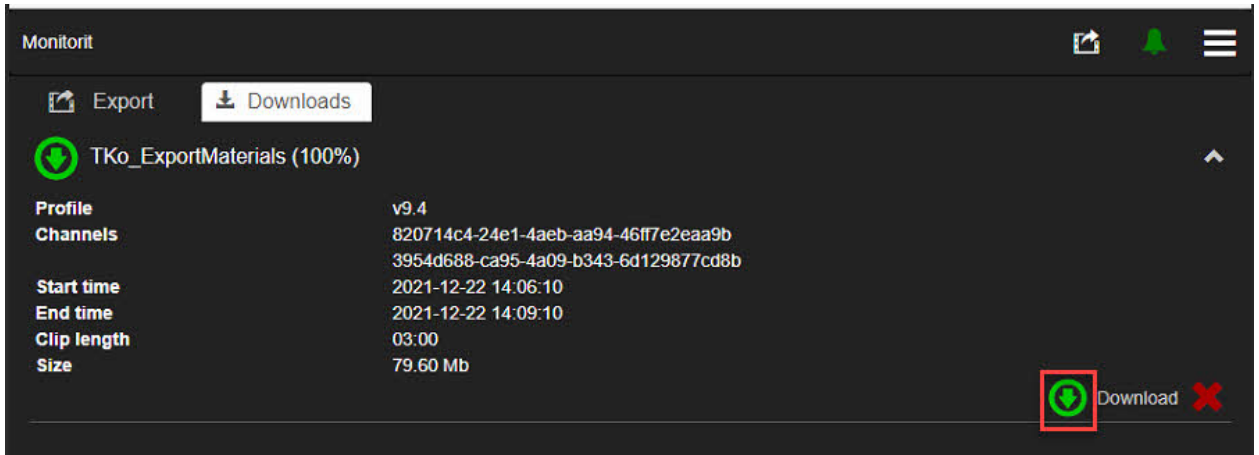
1. Click **Downloads**



2. Select clip from the list
3. Click **Download**

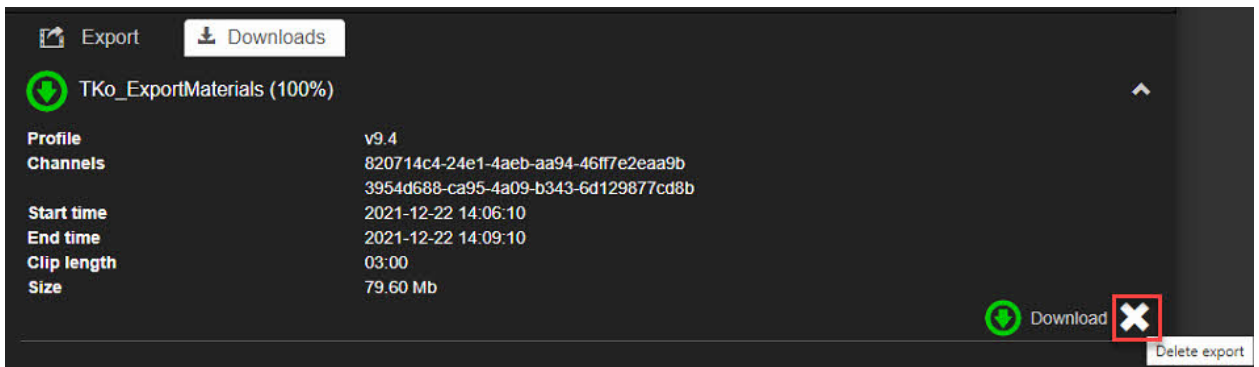


Spotter Web Guide V9.4



Deleting Downloads

1. Select clip from the list
2. Click **Delete export**



[Top](#) [Previous](#) [Next](#)



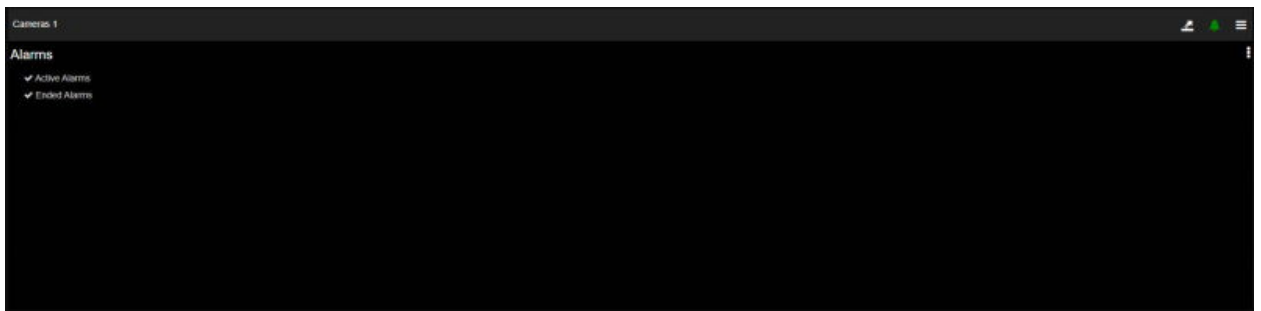
Spotter Web Guide V9.4

2.5. Alarms

[Download this user guide as PDF](#)

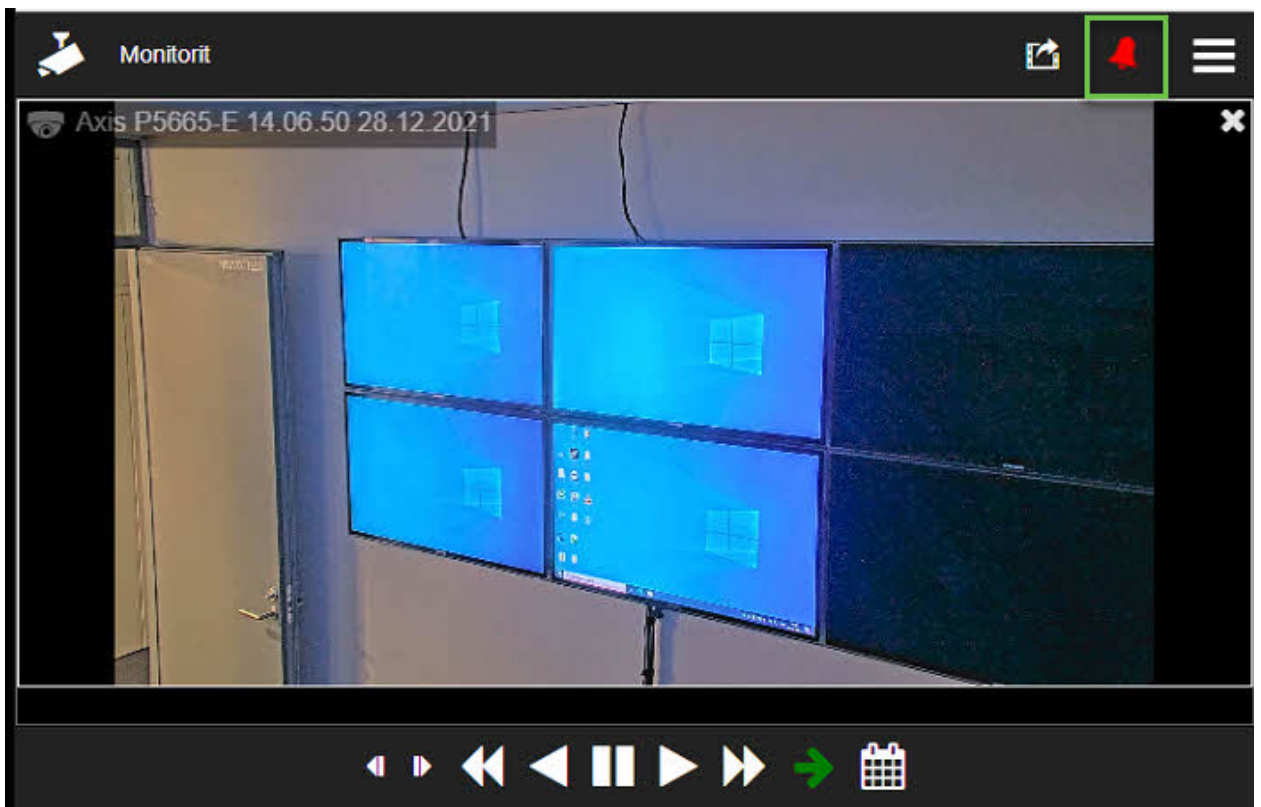
[Lataa tämä ohje PDF-muodossa](#)

When the alarm list is opened, the list shows active alarms with **RED** background and ended alarms with **GREY** background



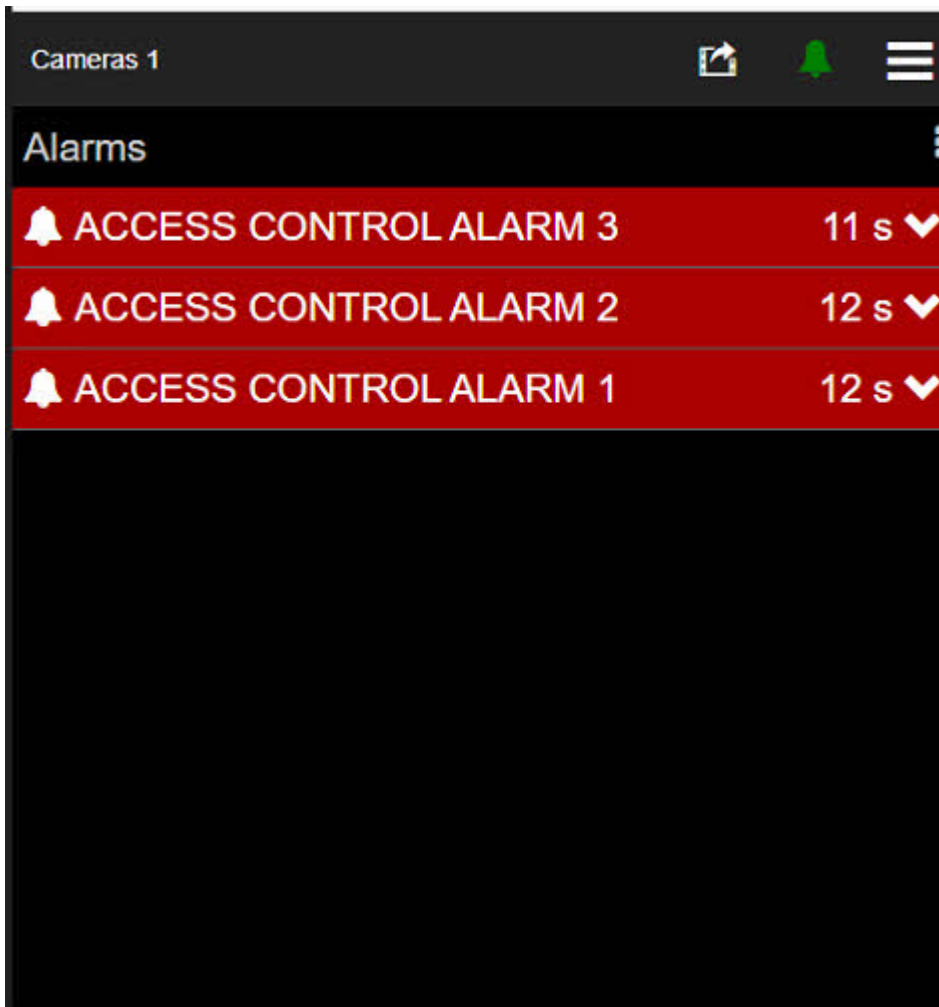
Active Alarms

If there are active alarms, the icon is **RED**





Spotter Web Guide V9.4



Alarm details

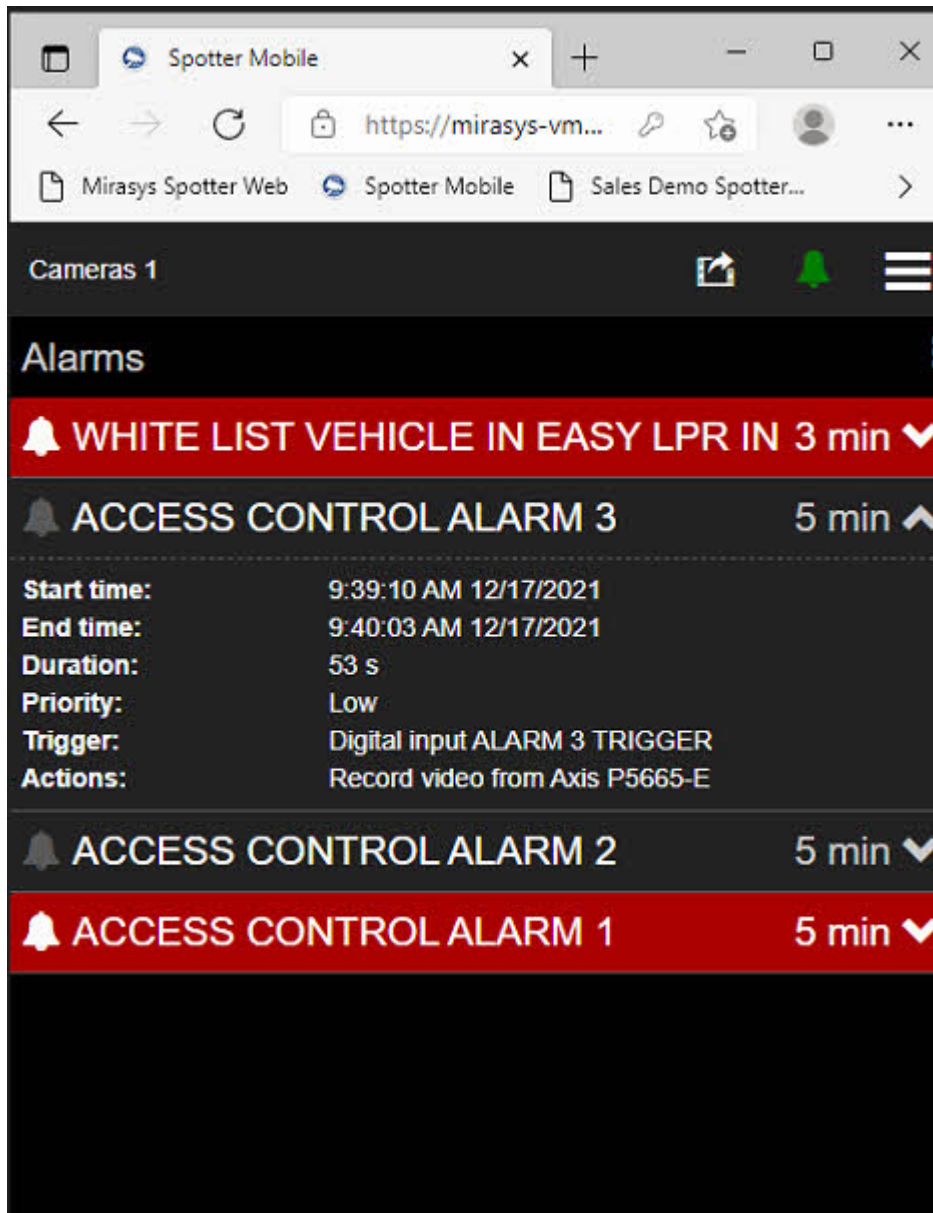
The user can see details of the alarm by clicking the small arrow end of the alarm name

The following details are shown:

- Alarm name
- Start time
- End time
- Duration
- Priority
- Trigger
- Actions



Spotter Web Guide V9.4

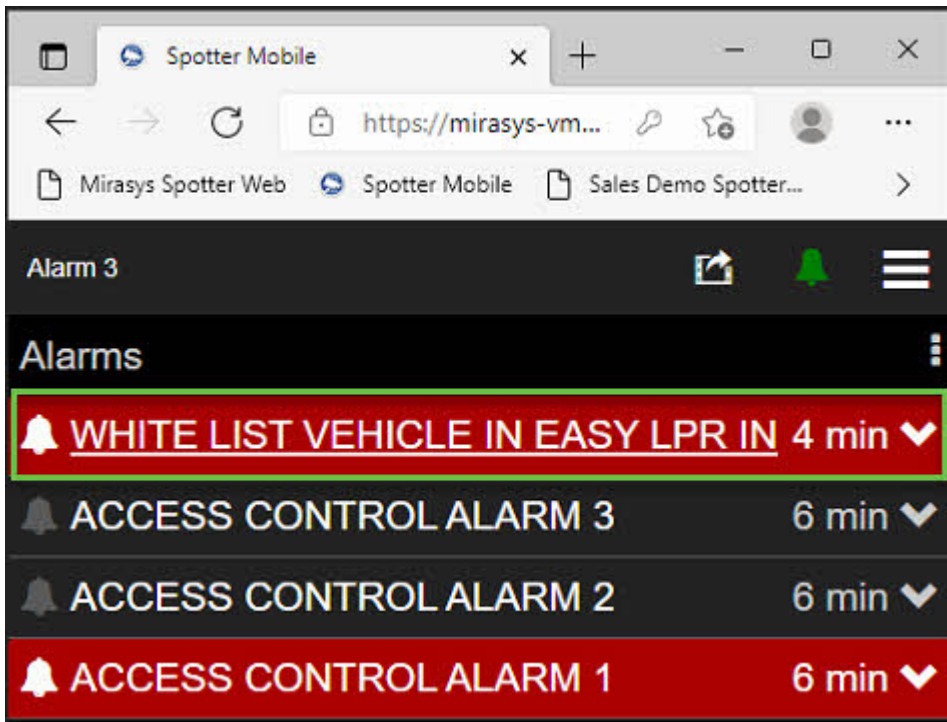


Opening an alarm

Alarms can be opened by selecting an alarm from the list



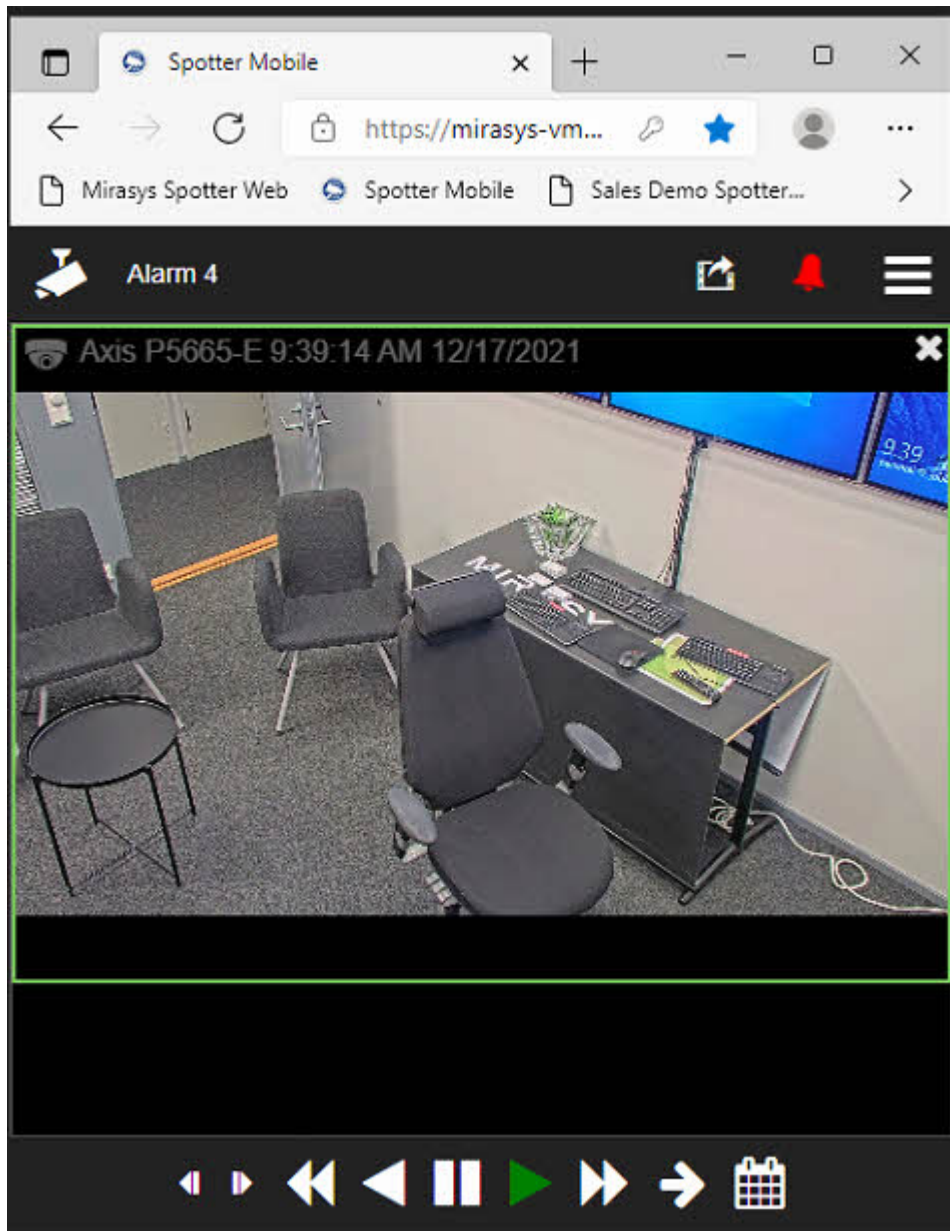
Spotter Web Guide V9.4



When an alarm is opened, then all cameras, which has been set as alarm action cameras will be opened



Spotter Web Guide V9.4



[Top](#) [Previous](#) [Next](#)



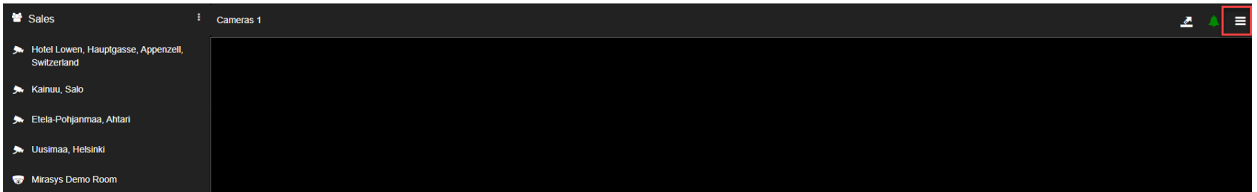
Spotter Web Guide V9.4

2.6. Views

[Download this user guide as PDF](#)

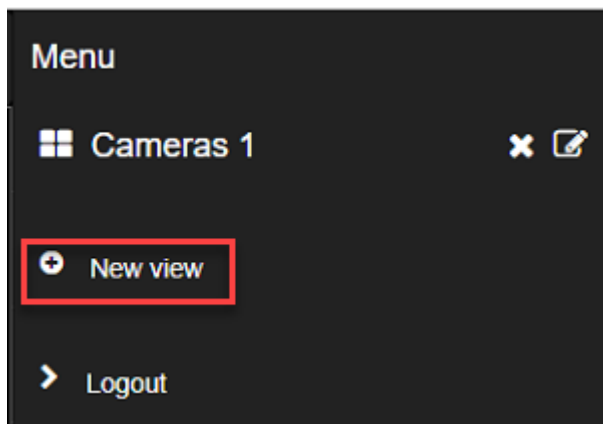
[Lataa tämä ohje PDF-muodossa](#)

1. Click the Settings icon from the upper right corner




New view

1. Click **New view**
2. Open needed cameras to the view

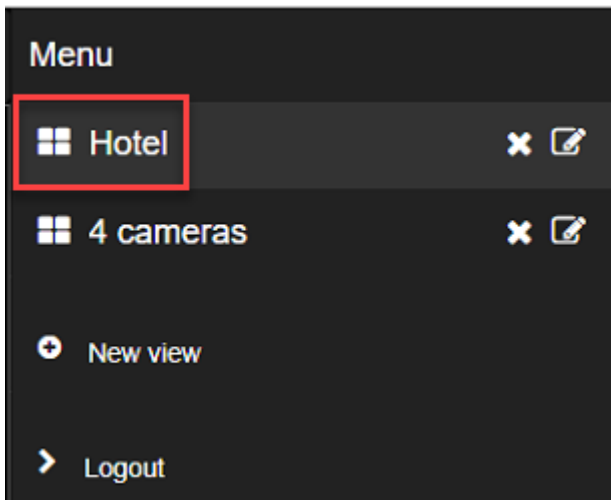


Changing the view

1. Click Settings icon 
2. Click view name



Spotter Web Guide V9.4



Editing the view name

1. Click **Settings**

2. Select view and click

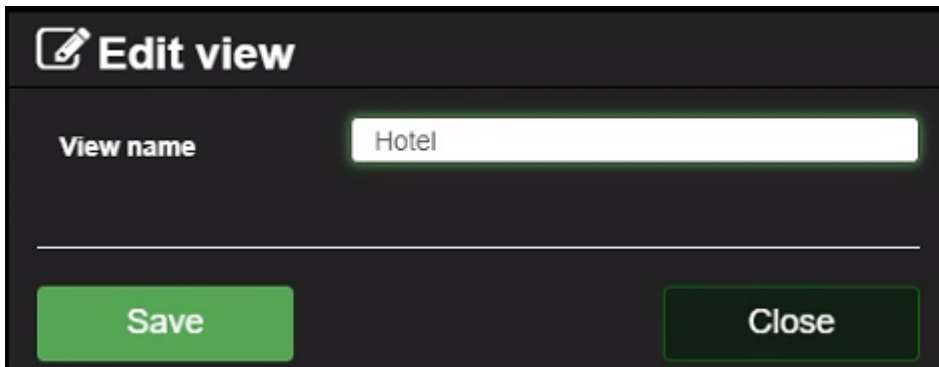


1. Change the view name

2. Click **Save**



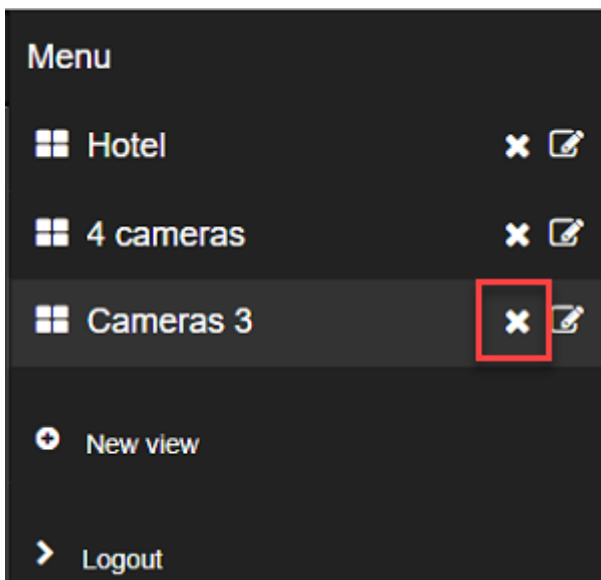
Spotter Web Guide V9.4



Deleting the view

1. Click **Settings**

2. Select the view and click



3. Confirm view deletion by clicking OK



[Top Previous](#)